



## Océ DDS Production Color

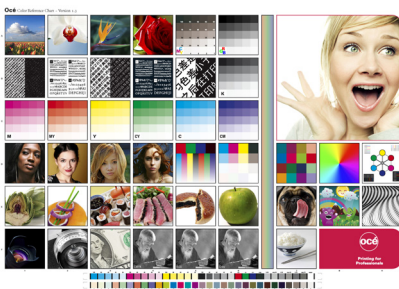
# Internal information



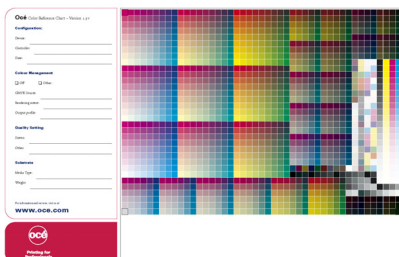
## Océ Color Reference Chart

### Evaluating the overall quality of production color systems

Updated info for Océ PRISMAsync color controller, CREO and EFI.



Front page



Back page

### One reference for all

This double-sided A3 / Tabloid print has been developed as a generic, printer-independent colour reference. It enables colour specialists **as well as** 'average users' to evaluate whether the print outcome of a production system is sufficient for their specific needs.

*Note:* As every quality judgment, the assessment of this chart is subjective to the person inspecting it. Due to many process variables and changing conditions, color differences will be visible.

The chart does not come with a manual on how to adjust a specific printer when certain quality issues appear. What it does give us is the possibility to use one common reference chart. You can for example print the chart, write down the actual print settings used on the back page and send this to local or HQ

service to illustrate specific challenges.

Most importantly however this chart was created as an attractive reference print you and customers can use (before and after calibration) to check the overall quality of production color systems. Please see page 2 of this document for more details on the different images and illustrations on the chart. We refer to them as 'patches'. For each patch, we indicate the content properties and attention points you, as a professional, would want to look at.

The Océ Color Reference Chart version 1.3 is available in A3 and Tabloid (11" x 17").

*If you have any questions or remarks please contact [Eric van der Kop](#) (Professional Services).*

## Explanation of objects

### Front page

Patch no.	Object	Color Space	Attached ICC Profile	What to focus on/remarks
A1	Sky with flowers	RGB	sRGB	Sky & clouds
A2	White flower	RGB	sRGB	Delicate details in white
A3	Orange flower	RGB	sRGB	Delicate dark gradients & details in orange
A4	Rose	RGB	sRGB	Clipping in red
A5	CMY patches	CMYK	none	Steps with equal values in CMY. Will be printed with brown (red) cast
A6	RGB patches	RGB	none	Steps with equal values in RGB. Represents neutral gray gradient
A7	Wow girl	RGB	none	No information in background & light skin tones
B1, B3, B5	Line art	CMYK	none	Black background CMYK: 30, 30, 30, 100
B2	Text	CMYK	none	Small fonts CMYK: 0, 0, 0, 100
B4	Knockout text	CMYK	none	Background CMYK: 40, 0, 0, 100
B6, C1-C6	CMY patches	CMYK	none	Values as in A5
D1-D4	Skin tones	RGB	sRGB	Details in shadows and light areas
D5-D7	Patches	CMYK	none	Reference CPS
D5	Gradients	CMYK	none	Illustrator gradient 100-0
D8	Saturation chart	Lab	none	
D9	Registration check	CMYK	none	Pure colors
E1-E7	Color references	RGB	sRGB	Details, colors
E8	Line art	CMYK	none	Details, gradients
E9	Line art	CMYK	none	Line sharpness
F1	Dark lens	RGB	sRGB	Details in shadows, white text
F2	Gray lens	RGB	sRGB	Gray balance, lines & black text
F3	Bank note	RGB	sRGB	Details in lines, light background
F4	Chinese man	CMYK	ISO Coated v2 (ECI)	Gray balance
F5	Chinese man	RGB	sRGB	Gray balance
F6	Chinese man	Gray	none	Gray balance
F7	Rice bowl	RGB	sRGB	Gray balance, details in light areas
F8	Océ payoff	Spot / CMYK	none	Pantone 185 C
A6.5	Vertical gradient	CMYK	none	Check for even density across drums
G1	MediaNOVA Proof Strip	CMYK	none	Standard reference

### Back page

- Space to insert information on actual device and print settings used
- ECI2002 chart, standard reference
- Borders correspond to those on front page to check duplex registration

## Océ PRISMAsync color

How to print the Color Reference Chart;

- Use Settings Editor
- Go to Media/Media families
- Select coated or uncoated (print icon in upper bar will become selectable)
- Click on print icon in the upper bar.  
If printing does not start, click again.

The following Fixed settings are used when printing the Océ Color Reference Chart. These Settings should also be used if you print the Océ Color Reference Chart direct.

- RGB input profile = sRGB
- Rendering intent = Perceptual
- Use embedded profiles = Yes
- CMYK input profile = None
- Rendering intent = Perceptual
- Use embedded profiles = Yes
- Screen: Dot 1
- Trapping: On

## EFI

Preferred EFI settings, for calibration evaluation and measuring targets:

- RGB source: none
- Print gray using black only (RGB): off
- Rendering Style: Photographic
- RGB separation: output
- CMYK simulation profile: none
- Print gray using black only (CMYK): Text/Graphics
- Spot Color Matching: on
- Black: Black overprint: off
- Black text graphics: normal
- Output profile: use media defined profile

## CREO

Preferred CREO settings, for calibration evaluation and measuring targets:

- CMYK simulation profile: Use source CSA
- Rendering Style: Perceptual
- RGB source: Use Source CSA
- Rendering Style: Perceptual
- Spot Color Matching: Spot Dictionary
- Black: Black overprint: off
- PostScript overprint: off
- Output profile: use media defined profile